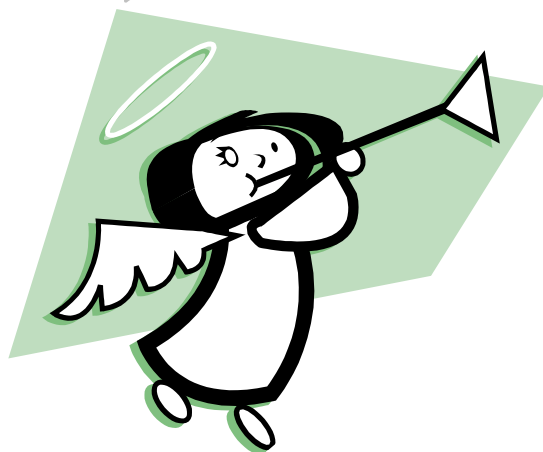


Need help learning to use ANGEL?



LET US HELP!

The pro's will be on hand to show you tips and tricks and answer any questions you may have about navigating through the Angel Learning System.

Drop in Room 113, Building A Downstairs

- Monday, April 11th from 9:00 a.m. to 11:00 a.m.
- Tuesday, April 12th from 12:00 p.m. to 1:30 p.m.
- Wednesday, April 13th from 9:00 a.m. to 11:00 a.m.
- Thursday, April 14th from 12:00 p.m. to 1:30 p.m.
- Monday, April 18th from 9:00 a.m. to 11:00 a.m.
- Tuesday, April 19th from 12:00 p.m. to 1:30 p.m.
- Wednesday, April 20th from 9:00 a.m. to 11:00 a.m.
- Thursday, April 21st from 12:00 p.m. to 1:30 p.m.

There will be sessions at the Mitchell County campus on Monday, April 11th from 3:00 p.m. to 4:00 p.m. and from 6:00 p.m. to 7:00 p.m. or by appointment only, please call Mary Perkins at 522-3640 to reserve your time.

Staff in the Library can assist you on the Grady County campus.

In addition, you may contact Brandi Cooper at 225-4326 during the quarter for assistance with ANGEL and on-line classes.